



# Veitchi Frame

Structural Framing Systems



veitchi  
frame





## In-Depth The Method

With Metframe, the simple efficiency of the system is central to its true value. We consider it to be our responsibility to drive the practicalities of the process; so our customers can rely on the quality of the manufacturing and the management of the project from first to last.

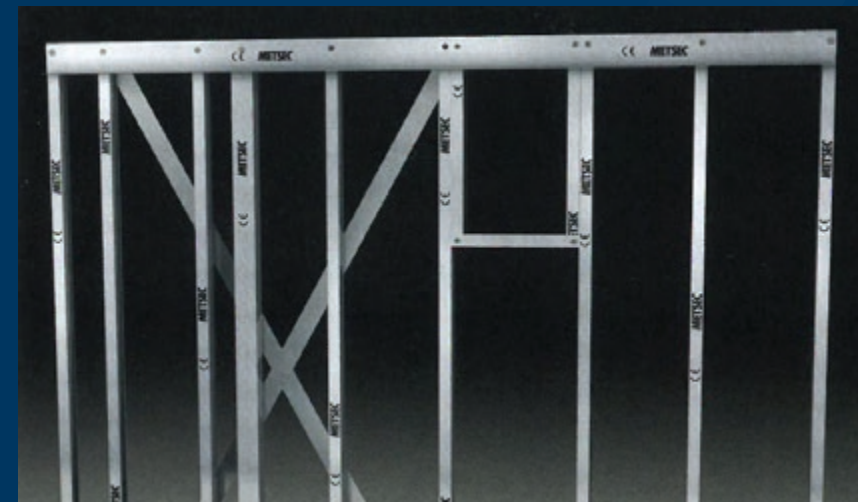
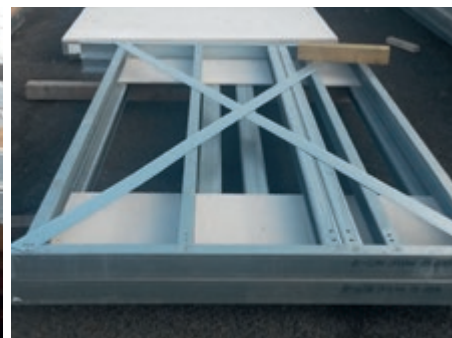
## Veitchi Frame Metframe Specialists

Veitchi have a proven track record in delivering Metframe structures in projects all across the UK. We have worked in partnership with Metsec Plc for over 20 years.

Metframe is a complete, structural load-bearing building system which is ideally suited for a wide range of sector applications.

These include – residential, care homes, hotels, social housing and student accommodation.

- ▶ Lightweight, cold-rolled galvanised steel sections.
- ▶ Sections are bolted together off-site to form structural internal and external wall panels.
- ▶ Creates a complete stand-alone, load bearing structure.
- ▶ A wide range of external finishes can be applied – brickwork, insulated render, timber cladding, composite panels, ventilated rainscreens and brick slips.
- ▶ Able to be designed to bespoke customer requirements.
- ▶ Veitchi can provide craneage, along with lifting plans and a fully qualified lifting team.
- ▶ A bespoke edge protection solution can also be offered.



### 01/ Off-Site Manufacture

Metsec manufacture the sections in precise lengths and the panels are assembled off-site at Veitchi Frame's production facility. External wall panels are pre-clad with either cement particle board or rigid insulation, which can include brick tie channels, to ensure a weather tight envelope is achieved quickly.

### 02/ Delivery to Site

Panels are delivered to site in the required erection sequence. This saves time on-site as the first panel to be lifted is the first panel to be installed.

### 03/ Panels Craned into Position

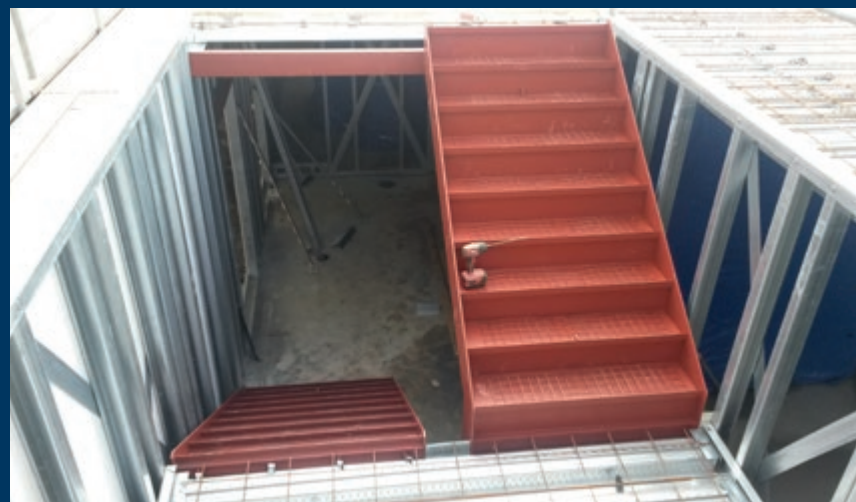
Once the panels are delivered to the site they are craned into position. Panels are then fixed down and bolted together.





## 04/ Further Panels Installed

Further panels are quickly fixed into position according to the design, forming the structural walls of the building. Wall panels incorporate cross bracing in order to provide overall stability to the structure, removing the need for hot rolled steel or concrete.



## 05/ Stairs and Lift Shafts

Stairs and lift shafts are an integral part of the Metframe system, they are installed as each floor is constructed. These take away the need to rely on external scaffold for access to upper levels, providing convenience and added speed to the erection process.



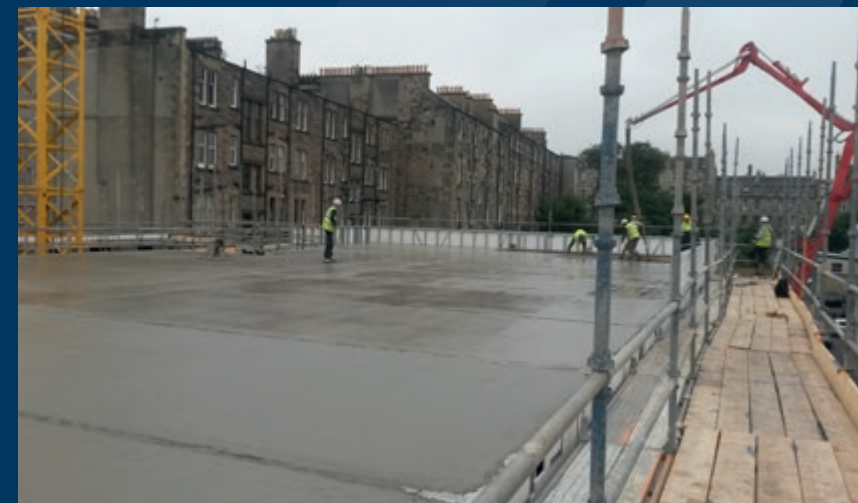
## 06/ Plasterboard and Bathroom Pods

Plasterboard packs and bathroom pods are craned into position floor by floor as the building is erected. This means fast and efficient location of products ready for follow on trades, accelerating the overall build programme.



## 07/ Metal Decking Installed

Composite metal decking is installed and fitted to the Z ledger incorporated in the walls panel. Rebar and crack control mesh is installed to meet the building's specific fire and robustness requirements. Lightweight steel joisted floors can be utilised as alternative to concrete.



## 08/ Concrete Poured

Concrete is poured into place to form a floor offering high fire and acoustic performance.

The concrete may be placed using a specialist concrete pump or utilising the crane and a concrete skip.



## 09/ Subsequent Floors Erected

This process is repeated and subsequent floors are typically constructed at a rate of 2 - 3 weeks. Certain follow on trades, for example window installation, can start as soon as work progresses to new floors above.



## 10/ The Finished Building

The structural roof is then installed.

Roofs may be pitched, flat or 'laid to fall' to suit your project. These can be formed in concrete, steel roof cassettes or purlins.

The structure is then handed over to our client – on time and on budget.





**Project** The Oxford Hotel / **Client** Knowles & Son / **Value** £500,000.00 / **Duration** 8 weeks

## The Oxford Hotel Case Study

Knowles & Son were contracted to deliver a 3 storey extension to the existing hotel. As this contractor had no experience of lightweight steel frames prior to this project they were naturally anxious to ensure that the frame erection ran smoothly. Veitchi were chosen to erect the Metframe lightweight steel frame based on our experience and track record of delivering projects on programme.

### Solution

Metframe provided the fastest, cleanest and one of the most efficient build methods available, all of which were key considerations when working adjacent to a live, trading hotel.

Careful planning and programming of the works ensured all deliveries were made at the correct time, minimising disruption to hotel guests while still allowing works to progress in a most efficient manner.

The structure was fully designed in a 'BIM' compliant model.

### Programme

8 week duration – The project was delivered on time.

### Client Testimonial

*"I cannot find anything negative to say about Veitchi, the level of service has been of the highest order, from the point of appointment to the final completion, it has been a seamless process.*

*Your overall site supervision and site delivery programme delivery hit every target and milestone set, the quality of works were first class, and the site teams were very professional at all times, hardworking and very helpful. A pleasure to have on-site.*

*The level of Health & Safety was of the highest order and set a standard for the entire project. We would not hesitate in recommending or re-approaching Veitchi for any future projects.*

*You can list this as a job well delivered."*

#### Ian Batchelor ACIOB

Head of Construction,  
Knowles & Son (Oxford) Ltd.



First Floor wall panels being erected: Oxford Hotel.

01/ First Floor wall panels being erected: Oxford Hotel.



02/ Concrete pump placing final section of concrete floor slab: Oxford Hotel.



03/ Second floor wall panels being erected: Oxford Hotel.





Project Haddington Pl, Edinburgh / Client Ogilvie Construction / Value £1,150,000.00 / Duration 18 weeks

## Haddington Place Case Study

A 7 storey structure forming student residencies comprising 240 bedrooms incorporating terraced roof areas. The project had a variety of external finishes including stone cladding to the main elevation. The site is situated on one of Edinburgh's busiest thoroughfares. The client had set the Main Contractor, Ogilvie Construction, a very challenging design and build programme.

### Solution

Metframe lightweight steel frame was identified by Ogilvie as the perfect solution. The dedicated design department ensured all material interfaces and technical detailing was carried out in advance of site works starting. This ensured when Veitchi arrived on site all works could proceed at pace and construction times were kept to an absolute minimum.

With only the building footprint as a 'lay down area', Veitchi had to operate a 'just-in-time' material delivery schedule.

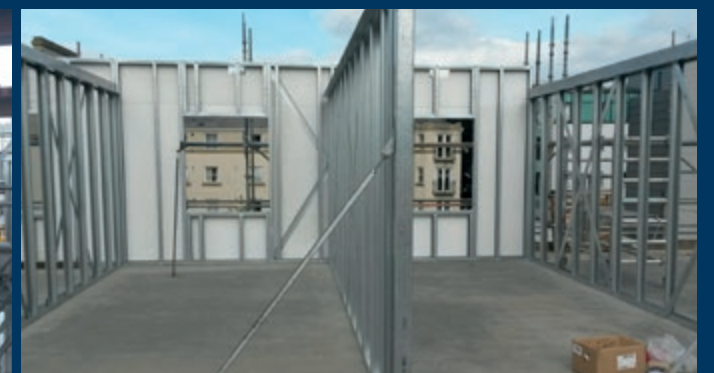
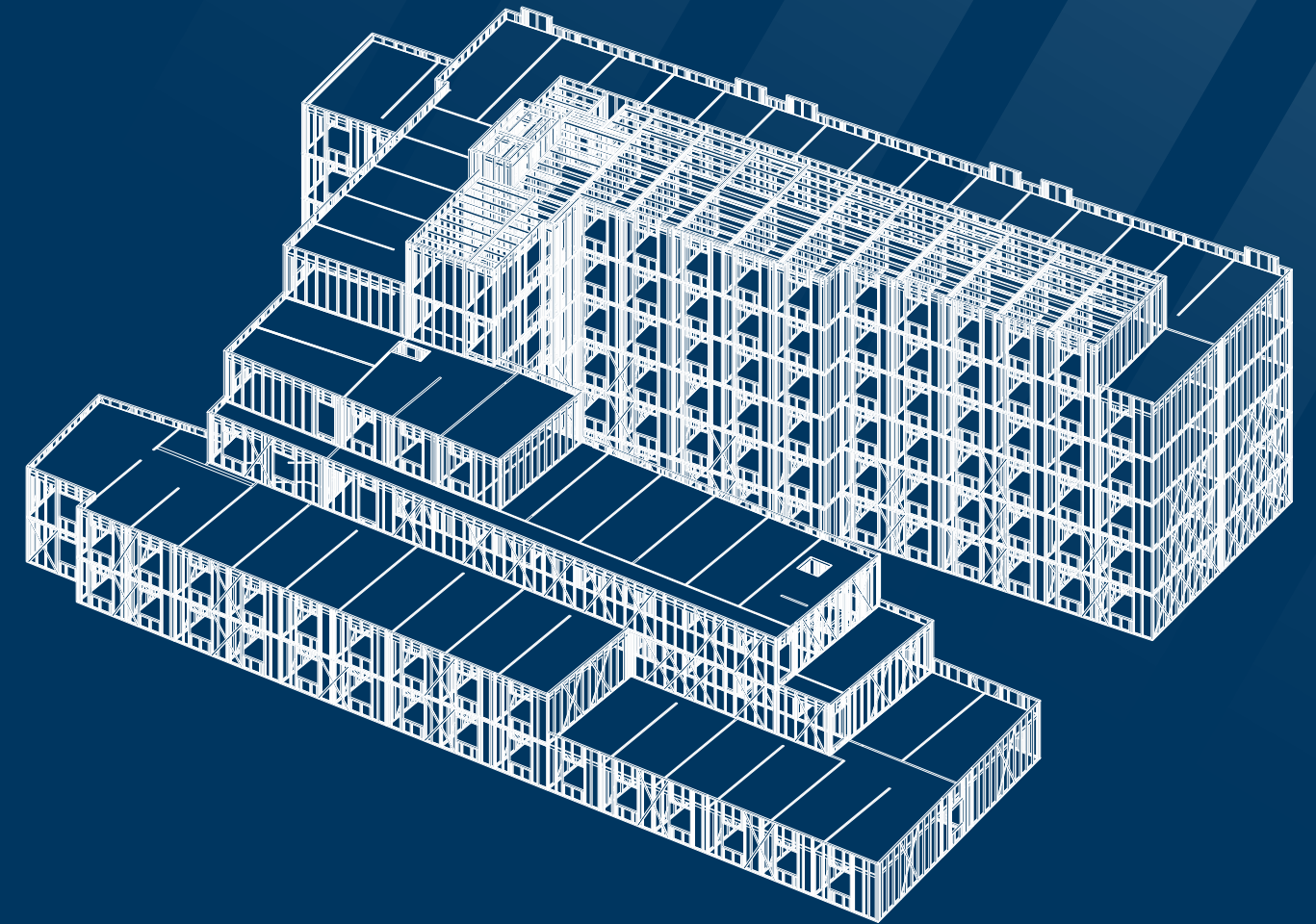
### Programme

18 week duration – The project was delivered on time and on budget.



## Haddington Place

Front 3D View







## Steel Framing Systems (SFS)

Veitchi Interiors were pioneers of the Metsec infill framing system and have completed projects spanning every part of the UK.

Working on a massive range and scale of projects from hotels, student residence, flatted developments, hospitals, prisons, offices and retail developments, this system provides the speed, flexibility and durability that has become the minimum standard on today's construction sites and makes Metsec Structural Framing System (SFS) the ideal envelope choice for the majority of new build and refurbishment projects.

From our Glasgow Head Office, the SFS estimating team will engage with main contractors early to ensure that we fully appreciate the scope of works and the design criteria preparing a very detailed design and quote that guarantee's the correct solution everytime.

- ▶ Fast track construction aids overall construction programme.
- ▶ Early weather protection is achieved to the building.
- ▶ Cutting components to length onsite means tolerances in the structures primary frame can be accommodated.
- ▶ Lightweight construction reduces loads on the primary structural frame and sub-structure design.
- ▶ High thermal and acoustic performance. Foil faced insulation is fitted externally which can be enhanced using insulation in the stud cavity.

## Veitchi Group Strength through Diversity

### Our Vision

Established in 1917 the Veitchi Group is one of Scotland's largest and most respected construction companies. It comprises 5 trading companies each of which are leaders in their own right and provide a wide variety of services to the construction industry across the UK such as flooring, interior fit out, building repair and preservation.

This, together with our financial strength and commitment to the health and safety of our workers sets us apart from our competitors.

We have the ability to package solutions involving the full range of our services. We can provide a one stop shop for the interior fit out aspect of any project eliminating risk and cost for our clients in the management of large, diverse contracts. The Veitchi Group has traded successfully for 100 years.

Our ethos has always been to provide the very best service to our clients. To achieve this, we work closely with our clients to understand their needs and wants. In this way we can provide a tailor made delivery across various trades focusing on the key areas of safety, innovation, reliability, quality, cost and added value.

### Our People

The Veitchi Group companies are committed to the pursuit of continual improvement and excellence in everything we do as evidenced by our ISO9001, 14001 & 18001 accreditations for Quality, Health & Safety and Environmental Management. At Veitchi we recognise that our staff are crucial to our success. We are therefore committed to not only recruiting the best people at all levels of the business but also to developing the skills of our staff. In this way, our people have the opportunity to develop in line with the business objectives of the Veitchi companies.

### Our Customers

Veitchi Group companies work for a wide range of blue chip customers across the private and public sectors. Our aim is to ensure that all customers are satisfied with our products and services to the extent that they will choose to work with us again and again.







With five specialist businesses in construction and interiors, the Veitchi Group offers a uniquely integrated range of services to contractors and property owners across the UK. Founded over a century ago, we've earned an enviable reputation among private and public sector clients as a one-stop shop for specialist solutions.



Part of the Veitchi Group

## Contact Us

### **Veitchi Frame**

8 Cambuslang Way,  
Gateway Glasgow, Glasgow,  
Cambuslang, G32 8ND

**T** 0141 647 9627

**E** [veitchiframe@veitchi.com](mailto:veitchiframe@veitchi.com)

**[www.veitchi.com](http://www.veitchi.com)**

**VeitchiValue** People • Pride • Prosperity